

County of San Luis Obispo Onsite Environmental Coordinator
Guadalupe Weekly Update 1-11-2012

Construction/remediation activities continue at the Chevron Guadalupe Oil Field Remediation Site (Field) this week. The San Luis Obispo County Onsite Environmental Coordinator (OEC) continues to be present at the Field on a daily basis.

The following description of the weekly activities at the Field will give any of the interested parties an opportunity to identify additional requests in terms of special monitoring or approval requirements for any particular tasks on the Field. Significant issues are underlined>.

- The hydrocarbon release continues to be monitored (visual and odor surveys 3x/week) near the old 5X Excavation Site. There was no hydrocarbon odor detected on the beach this week by Padre staff and/or the OEC.
- The MACC will be meeting at the Guadalupe Field Office on January 20, 2012 at 10 am.

To help orientate the placement of remediation activities, Figure 1 shows the Field and the location of all active project sites (marked in dark green for active excavation sites and blue for ongoing operations) where remediation activities are occurring. The approximate location of the new perimeter fence is marked in yellow.

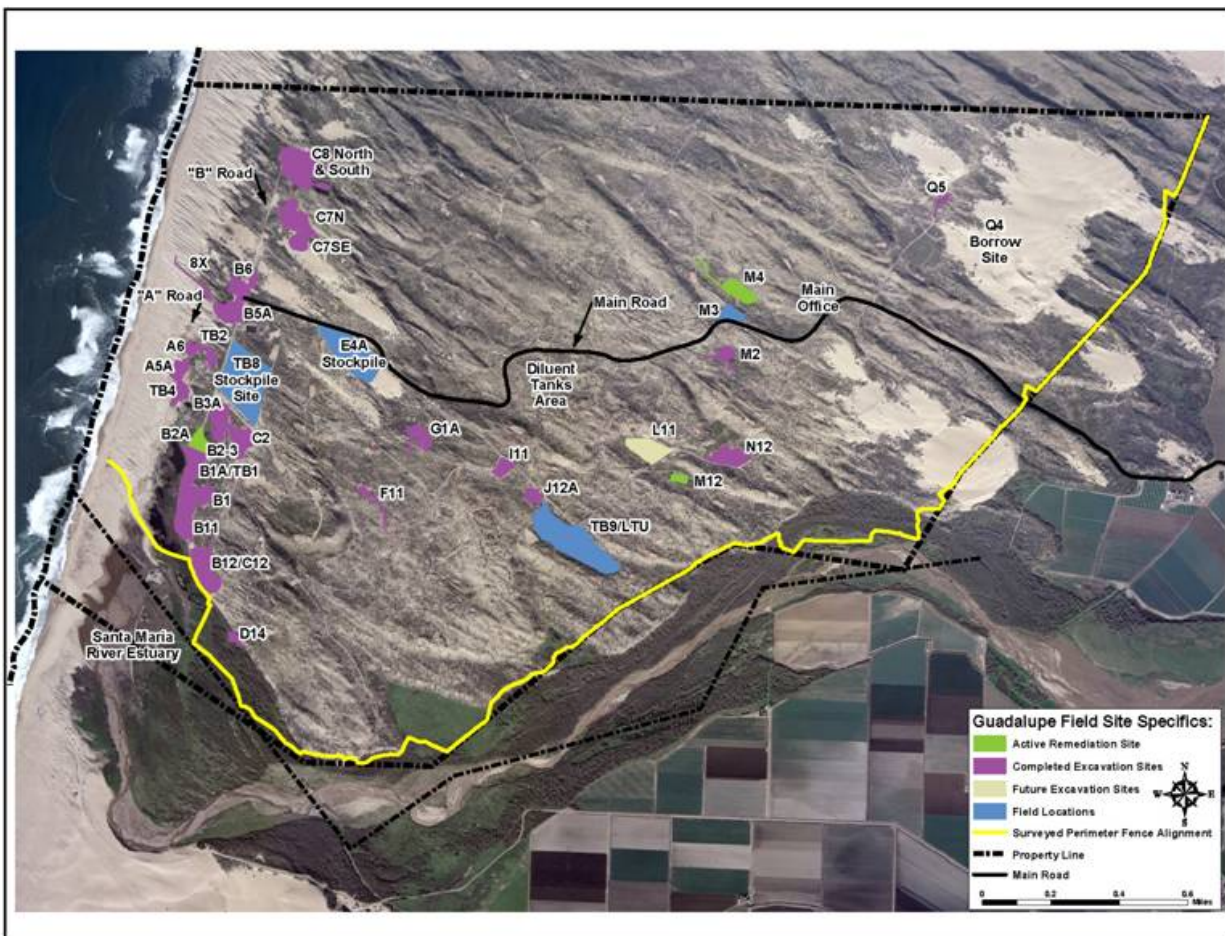


Figure 1. Active Remediation Sites

Here are the activities for the last week:

Remediation Activities:

M4 Excavation Site

- Chevron has completed backfill and pulling sheetpile for the site (photo below) and is currently grading the site for final grade.
- Chevron will begin to collect willow cuttings from the Santa Maria River channel to be used in restoration efforts at this site in the next few weeks.
- Chevron has completed filling the additional wetland habitat outside the original project boundary footprint (photo below) within the M4 valley with clean sand to reduce the potential exposure risk to wetland species.

L11 Remediation Site

- Chevron has completed the L11 Wetland Remediation project which involved filling five federal wetlands within the L11/M12 valley with clean sand to reduce the potential exposure risk to wetland species (photo below).
- Chevron will collect willow poles in the next months for restoration efforts at this site.
- Chevron will complete pad and road removal at this site in the next few months.

B2/B2A Excavation Site

- Chevron has completely excavated and hauled all of the originally approved diluent-contaminated soil from this site and has removed the sheetpile walls for the two previously approved sheetpile wall excavations.
- Most of the original project boundary at this site has been graded to final grade and is being prepared for restoration efforts; the silt fence in this area has been removed.
- Sheetpile has been completed around the final cell of contaminated material at this site, the cell has been dewatered, and Chevron began excavating the contaminated material this week.
- Chevron plans on completing excavation within the last cell within the week and will begin backfill next week.

M12 Excavation Site

- Entact has completed backfill and grading of this site and is in the process of planting out wetland plant species.
- Pigs have been observed rooting around this wetland restoration site and have impacted several La Graciosa thistles at this site. Chevron has installed cages around thistles to protect them from additional pig activity. No additional pig disturbances have been observed in the last few weeks at this site.

B5 Retention Basin

- The old retention basin was backfilled with material from the B2 Site and has been graded this last week.

C1A Oil Spray Removal Test

- Chevron, in coordination with SLO County, has instigated an oil spray removal test near the C1A Pad site.
- Four different methods are being analyzed to remove or break-up (and leave in place) the oil spray layer covering coastal dune scrub habitat. These test sites are being monitored for several growing seasons to see how the biological resources respond to the different treatments.



M4 Remediation Site; placing vegetative overburden on post excavation site. Note: filled wetland located on right-hand side of project site (area with slightly darker sand).



B2 Installing sheetpile around the final cell of contaminated material at this site.



B2 Site: installing piping for the dewatering system inside the sheetpile wall.

Hauling Activities

- RTS has temporarily ceased hauling activities.
- As of November 11th, RTS has hauled a total of 51,829 loads to the Landfill which is an estimated total of 1,183,622 tons (857,697 c.y.) of contaminated soil. The original quantity analyzed in the EIR was 860,000 cubic yards of hauled material which is roughly equal to 1,186,800 tons.
- Chevron has submitted a permit application to increase the amount of material permitted to haul to the landfill by 500,000 c.y. The County of San Luis Obispo continues the environmental review for the increased hauling.

Perimeter Fence Installation

- No cattle have been observed on the Chevron property this week.

Other Field Activities:

- Chevron consultants continue to collect monitoring well samples throughout the Field according to their quarterly schedule.
- Chevron wildlife monitors conduct daily checks of the access roads prior to anyone entering the site.

Sensitive Species Issues:

- Chevron biologists continue to conduct their weekly CRLF survey of the TB8 retention basins.
- Chevron biologists continue to monitor restoration sites throughout the lease.



Loggerhead shrike, ready and waiting.