

County of San Luis Obispo Onsite Environmental Coordinator  
Guadalupe Weekly Update 01-06-2010

Major construction/remediation activities continue at the Chevron Guadalupe Oil Field Remediation Site (Field) this week. The San Luis Obispo County Onsite Environmental Coordinator (OEC) continues to be present at the Field on a daily basis.

The following description of the weekly activities at the Field will give any of the interested parties an opportunity to identify additional requests in terms of special monitoring or approval requirements for any particular tasks on the Field. Significant issues are underlined>.

To help orientate the placement of remediation activities, Figure 1 shows the Field and the location of all active project sites (marked in dark green for active excavation sites and blue for ongoing operations) where remediation activities are occurring.

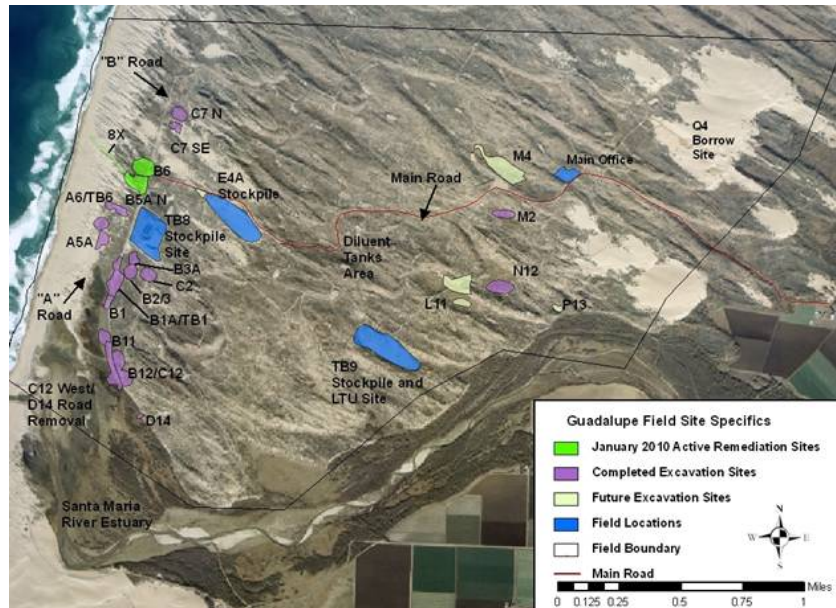


Figure 1. Active Remediation Sites

Here are the activities for the last two weeks:

- The lease was closed Thursday, December 24, Friday, December 25, and Friday January 1 in observance of the Christmas and New Year's holidays. In addition, Wednesday, December 23 and Thursday, December 31, the site was open for a half days with only URS personnel present.

**Excavation Activities:**

1. Remediation activities of the entire TB1 Site completed.
2. Contouring of TB1, complete.
3. Clean overburden removal at B5A, ongoing.
4. Backfill and recontouring TB9-2 stockpile site, complete.

**B5A Excavation Site**

Remediation activities continued this week at the B5A Excavation Site.

- Chevron/Recon continues removing clean overburden from the site. All clean overburden is stockpiled at the approved E4A stockpile. Any affected material encountered is taken to TB8. As of December 31st, Recon has hauled approximately 37,125 c.y. of clean overburden from this site to the E4A Stockpile area. Any pipelines encountered during clean overburden removal are removed to TB8.
- During vegetated overburden removal, the URS staff identified two diluent contaminated areas west of the sheetpile wall limits. Chevron/URS have collected hand auger samples west of the sheetpile wall and will be presenting a modified work plan of action for agency approval in the next two weeks.

## **TB1 Excavation Site**

Remediation activities were completed at the TB1 Excavation Site last month.

- Excavation of the entire TB1 site is complete. The site has been backfilled with material from E4A, A Road, and 8X Road blowsand. The dewatering system has been shut down, dismantled, and removed from the TB1 South excavation. The sheetpile has been completely extracted from the entire site. Any sheetpile bordering the contamination on the outside of the sheetpile was treated as dirty and was segregated from the clean material. Efforts were made to separate these potentially contaminated sheets from the clean backfill.
- Final contours of the TB1 site were approved last month. Excess clean overburden was hauled to TB9 S2 for backfill of that site.
- California red-legged frog eyeshines have ceased.

## **TB9-2 Stockpile Removal**

- Chevron/Recon have completed excavation of the TB9-2 (upper) stockpile. Recon finished contouring the site with excess clean overburden from TB1 last week. Vegetation stockpiled at the P13 pad and vegetated overburden stockpiled at the M3 pad (all excess from the N12 excavation) were placed on the surface of the site.
- This week, Chevron/Recon began removal of the pipeline which runs from the TB9-2 (upper) stockpile to the LTU.

## **B6 Excavation Site**

- Chevron is using the B6 Excavation site as a temporary stockpile for vegetated overburden from the B5A excavation. Restoration activities at the western portion of the B6 Excavation Site will be delayed and will be done in conjunction with restoration of the B5A excavation that could occur as late as next Spring/Summer. Restoration activities have begun on the eastern portion of the B6 side (east of the B Road). Vegetation and vegetated overburden have been placed on the site.

## **Perimeter Fence Installation**

- Chevron has only completed the segment of the site-wide perimeter fence from the beach to the D14 Restoration Site.



**B5A excavation of clean overburden, late December**



**B5A: hot-tapping pipelines before their removal.**



**E4A clean overburden stockpile site (site now contains at least 37,125 cubic yards of clean overburden from the B5A site).**

- RTS continues to haul diluent-contaminated material from the TB8 Stockpile site to the Santa Maria Landfill. RTS currently has sixteen trucks hauling material to the landfill. Between December 21<sup>st</sup> and December 31<sup>st</sup>, RTS hauled a total of 221 trips (approximately 5,132 tons of material). RTS has hauled a total of 37,035 loads of contaminated material to the landfill which is approximately 846,415 tons of material. RTS trucks continue to remain off of Betteravia Road between 4:30 and 5:30 pm as detailed in the SLO County Conditions. The first trucks do not leave the Field until after 8:00 am each morning and the last loads arrive at the Landfill at approximately 3:45 (the landfill closes at 4 pm). Recon begins work at 7:00 am. Each truck is loaded with approximately 24 tons or 16 to 18 cubic yards of material.
- Chevron staff continues to collect a baseline air sample at the onset of the excavation of contaminated material at each site and then as directed for safety purposes thereafter.
- At the end of each week, the entire portion of the TB8 Stockpile that was in any way affected by hauling activities is sprayed with Soil Sement to reduce emissions.

#### **Other Field Activities:**

- Chevron contractors continue to clear sand blown off of the Main Road. All collected sand is placed at the E4A or other approved stockpile.
- Chevron consultants continue to collect monitoring well samples throughout the Field according to their quarterly schedule.
- Weed species continue to be sprayed with herbicide or pulled throughout the lease.
- Chevron wildlife monitors conduct daily checks of the access roads prior to anyone entering the site.
- Chevron has implemented a safety-based program to monitor motor vehicle speeds on the lease.
- Chevron has proposed the installation of a walking path between the Main office and the Q4 borrow site.
- Chevron installed an electric fence around the B2-3 and B3A wetland restorations.
- Sage Electric will be on-site to perform maintenance work for two days during one of the next two weekends.

#### **Sensitive Species Issues:**

- Chevron will be replacing the overnight lights at TB8 with automatic sensor lights in the hopes of reducing potential impacts to wildlife.
- Chevron biologists conducted their weekly survey of the TB8 Retention Basins this week on Monday.

- Chevron biologists continue to monitor restoration sites throughout the lease. Chevron biologists continue to survey plants and remove weeds at the D14, B12/C12, B1, B11, and M2 restoration sites. Chevron biologists also continue to install and repair sand fences and seed at active restoration sites. In December, California Conservation Corps volunteers were on-site to plant container plants at N12.
- Chevron biologists are conducting egg-mass surveys for California red-legged frogs at wetlands lease-wide.
- Cows continue to access and graze around the Loop Road and in the foredunes, west of the marsh ponds.



**Waterfowl at the Marsh Ponds.**