

County of San Luis Obispo Onsite Environmental Coordinator
Guadalupe Weekly Update 01-14-2010

Major construction/remediation activities continue at the Chevron Guadalupe Oil Field Remediation Site (Field) this week. The San Luis Obispo County Onsite Environmental Coordinator (OEC) continues to be present at the Field on a daily basis.

The following description of the weekly activities at the Field will give any of the interested parties an opportunity to identify additional requests in terms of special monitoring or approval requirements for any particular tasks on the Field. Significant issues are underlined>.

To help orientate the placement of remediation activities, Figure 1 shows the Field and the location of all active project sites (marked in dark green for active excavation sites and blue for ongoing operations) where remediation activities are occurring.

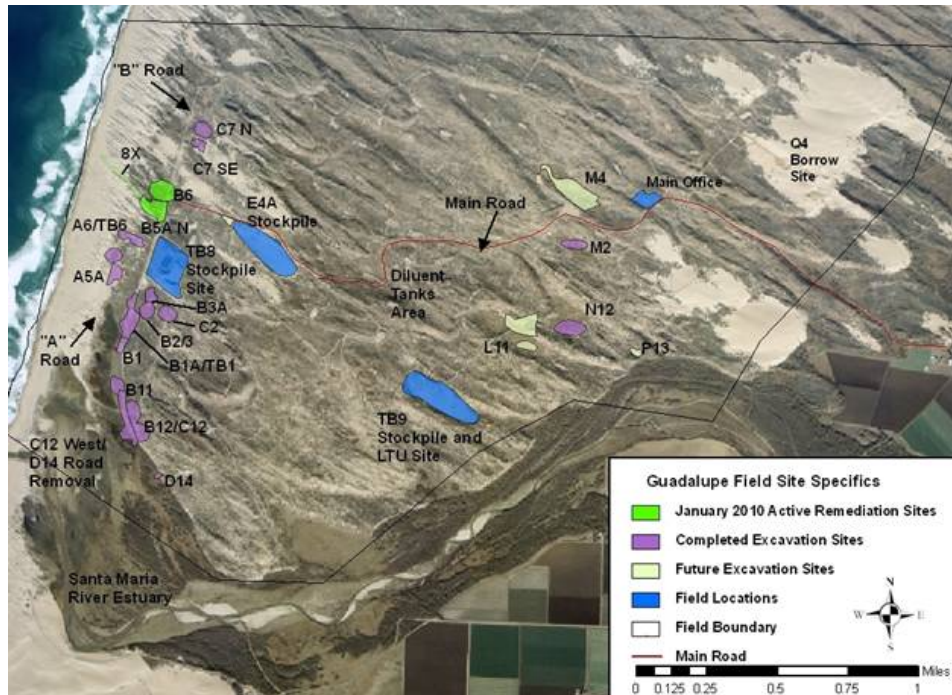


Figure 1. Active Remediation Sites

Here are the activities for the last two weeks:

Excavation Activities:

1. Clean overburden removal at B5A, ongoing.
2. Backfill and recontouring TB9-2 stockpile site, complete.
3. A Road Blow sand removal and road removal from the Santa Maria Estuary to the A2A Site.

B5A Excavation Site

Remediation activities continued this week at the B5A Excavation Site.

- Chevron/Recon continues removing clean overburden from the site. All clean overburden is stockpiled at the approved E4A stockpile. Any affected material encountered is taken to TB8. As of January 8th, Recon has hauled approximately 45,235 c.y. of clean overburden from this site to the E4A Stockpile area. Any pipelines encountered during clean overburden removal are removed to TB8.
- During vegetated overburden removal, the URS staff identified two diluent contaminated areas west of the sheetpile wall limits. Chevron/URS have collected hand auger samples west of the sheetpile wall and will be presenting a modified work plan of action for agency approval in the next two weeks.

A Road Removal

- Remediation activities were begun this week on the partial removal of the red rock/asphalt road between the Santa Maria Estuary and the A2A Pad. (Only a portion of the road was proposed for removal due to the potential for future remediation activities in the area that would require access.)
- The A Road removal will result in two portions of red rock and asphalt road to be “stranded”: (1) a portion of the A Road several hundred feet long, between the A Road and the Loop Road which is predominantly covered with vegetated dunes and is acting as a partial barrier wall between the Estuary and the Marsh Ponds, and (2) a portion of road heading to the west of the A Road (originally accessing the 5X Site) which is currently covered with sand dunes and vegetated foredunes.
- Excavation activities along the A Road and adjoining pads will be completed prior to the onset of the Western Snowy Plover breeding season.

TB1 Excavation Site

Remediation activities were completed at the TB1 Excavation Site last month.

- Final contours of the TB1 site were approved last month.
- California red-legged frog eyeshines have ceased.

TB9-2 Stockpile Removal

- Chevron/Recon have completed excavation, backfill, and contouring of the TB9-2 (upper) stockpile.
- Last week, Chevron/Recon removed the pipeline which ran from the TB9-2 (upper) stockpile to the LTU. Using an excavator at the LTU, the pipeline was pulled down and cut into twenty-foot increments.
- During the daily check of the TB9 lower stockpile basin, a burrowing owl was observed leaving its wintering burrow in an asphalt berm behind the stockpile.

B6 Excavation Site

- Chevron is using the B6 Excavation site as a temporary stockpile for vegetated overburden from the B5A excavation. Restoration activities at the western portion of the B6 Excavation Site will be delayed and will be done in conjunction with restoration of the B5A excavation that could occur as late as next Spring/Summer. Restoration activities have begun on the eastern portion of the B6 side (east of the B Road). Vegetation and vegetated overburden have been placed on the site.

Perimeter Fence Installation

- Chevron has only completed the segment of the site-wide perimeter fence from the beach to the D14 Restoration Site.



B5A excavation of clean overburden, mid January.



B3A removal of concrete basin.



Portion of A Road near estuary prior to removal.

- RTS continues to haul diluent-contaminated material from the TB8 Stockpile site to the Santa Maria Landfill. RTS currently has sixteen trucks hauling material to the landfill. For the week ending January 8, 2010, RTS hauled a total of 259 trips (approximately 5,799 tons of material). RTS has hauled a total of 37,334 loads of contaminated material to the landfill which is approximately 853,206 tons of material. RTS trucks continue to remain off of Betteravia Road between 4:30 and 5:30 pm as detailed in the SLO County Conditions. The first trucks do not leave the Field until after 8:00 am each morning and the last loads arrive at the Landfill at approximately 3:45 (the landfill closes at 4 pm). Recon begins work at 7:00 am. Each truck is loaded with approximately 24 tons or 16 to 18 cubic yards of material.
- Chevron staff continues to collect a baseline air sample at the onset of the excavation of contaminated material at each site and then as directed for safety purposes thereafter.
- At the end of each week, the entire portion of the TB8 Stockpile that was in any way affected by hauling activities is sprayed with Soil Sement to reduce emissions.

Other Field Activities:

- Chevron contractors continue to clear sand blown off of the Main Road. All collected sand is placed at the E4A or other approved stockpile.
- Chevron consultants continue to collect monitoring well samples throughout the Field according to their quarterly schedule.
- Weed species continue to be sprayed with herbicide or pulled throughout the lease.
- Chevron wildlife monitors conduct daily checks of the access roads prior to anyone entering the site.
- Chevron has implemented a safety-based program to monitor motor vehicle speeds on the lease.
- Chevron has proposed the installation of a walking path between the Main office and the Q4 borrow site.
- Sage Electric will be on-site to perform maintenance work for two days during one of the next two weekends.

Sensitive Species Issues:

- Chevron replaced the overnight lights at TB8 with automatic sensor lights in the hopes of reducing potential impacts to wildlife.
- Chevron biologists conducted their weekly survey of the TB8 Retention Basins this week on Monday.
- During the daily check of the TB9 lower stockpile basin, a burrowing owl was observed leaving its wintering burrow in an asphalt berm behind the stockpile.

- Chevron biologists continue to monitor restoration sites throughout the lease. Chevron biologists continue to survey plants and remove weeds at the D14, B12/C12, B1, B11, and M2 restoration sites. Chevron biologists also continue to install and repair sand fences and seed at active restoration sites. In December, California Conservation Corps volunteers were on-site to plant container plants at N12.
- Chevron biologists are conducting egg-mass surveys for California red-legged frogs at wetlands lease-wide.
- Cows continue to access and graze around the Loop Road and in the foredunes, west of the marsh ponds.



White pelicans lounging at the Santa Maria River estuary.