

County of San Luis Obispo Onsite Environmental Coordinator  
Guadalupe Weekly Update 02-3-2010

Major construction/remediation activities continue at the Chevron Guadalupe Oil Field Remediation Site (Field) this week. The San Luis Obispo County Onsite Environmental Coordinator (OEC) continues to be present at the Field on a daily basis.

The following description of the weekly activities at the Field will give any of the interested parties an opportunity to identify additional requests in terms of special monitoring or approval requirements for any particular tasks on the Field. Significant issues are underlined.

To help orientate the placement of remediation activities, Figure 1 shows the Field and the location of all active project sites (marked in dark green for active excavation sites and blue for ongoing operations) where remediation activities are occurring.

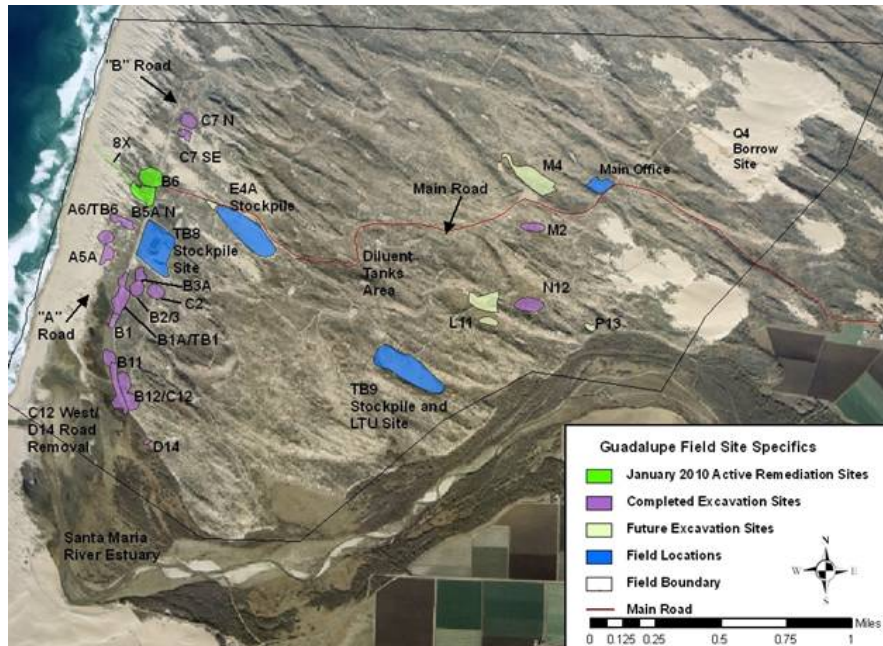


Figure 1. Active Remediation Sites

Here are the activities for the last two weeks:

Most remediation activities onsite were temporarily halted from January 18<sup>th</sup> through the 26<sup>th</sup> due to strong winds and heavy rains.

**Excavation Activities:**

1. Sheetpile Installation at B5A, ongoing.
2. F11 access road and pad removal ongoing.
3. Q5 access road removal complete.
4. A Road Blow sand removal and road removal from the Santa Maria Estuary to the A2A Site.

**B5A Excavation Site**

Remediation activities continued this week at the B5A Excavation Site.

- Chevron/Recon completed the removal of clean overburden from the site. All clean overburden has been stockpiled at the approved E4A stockpile. As of January 29th, Recon has hauled approximately 45,295 c.y. of clean overburden from this site to the E4A Stockpile area.
- Sheetpile crew is currently installing sheets around the excavation area.

**A Road Removal**

- Remediation activities continue this week on the partial removal of the red rock/asphalt road between the Santa Maria Estuary and the A2A Pad. (Only a portion of the road was proposed for removal due to the potential for future remediation activities in the area that would require access.) Photos below.

- Several portions of the existing redrock road, asphalt, and base material were left in place along the A Road and adjoining pads to reduce impacts to foredune habitat and/or populations of the sensitive species, dandelion.
- The A Road removal will result in two portions of red rock and asphalt road to be “stranded”: (1) a portion of the A Road several hundred feet long between the A Road and the Loop Road, which is predominantly covered with vegetated dunes and is acting as a partial barrier wall between the Estuary and the Marsh Ponds, and (2) a portion of road heading to the west of the A Road (originally accessing the 5X Site) which is currently covered with sand dunes and vegetated foredunes.
- Excavation activities along the A Road and adjoining pads will be completed prior to the onset of the Western Snowy Plover breeding season.

### **TB1 Excavation Site**

Remediation activities were completed at the TB1 Excavation Site last month.

- Final contours of the TB1 site were approved last month.
- California red-legged frog eyeshines have ceased.

### **TB9-2 Stockpile Removal**

- Chevron/Recon have completed excavation, backfill and contouring of the TB9-2 (upper) stockpile.
- Recon has begun fencing, installing a decon pad and vegetation clearing for the TB9-1(lower) stockpile. Recon/RTS will be loading highway haul trucks directly from this site.
- Chevron reports finding and relocating a juvenile California red-legged frog from this site during the pre-disturbance frog survey.

### **B6 Excavation Site**

- Chevron is using the B6 Excavation site as a temporary stockpile for vegetated overburden from the B5A excavation. Restoration activities at the western portion of the B6 Excavation Site will be delayed and will be done in conjunction with restoration of the B5A excavation that could occur as late as next Spring/Summer. Restoration activities have begun on the eastern portion of the B6 side (east of the B Road). Vegetation and vegetated overburden have been placed on the site.

### **Perimeter Fence Installation**

- Chevron has only completed the segment of the site-wide perimeter fence from the beach to the D14 Restoration Site.



A Road removal.



A Road removal; note layer of red rock and road base that will remain in place to preserve functioning foredune habitat above.



N12 Created wetland: SWPPE repairs (note erosion features) were required at this and several areas on the site during the last storms.



F11 pad and access road removal. Diluent-contaminated soils were exposed (more than 8 feet deep) during the removal of the redrock and base material on the pad site. Chevron is currently “chasing” contamination and coordinating with the RWQCB.



Q5 access road removal.

- RTS continues to haul diluent-contaminated material from the TB8 Stockpile site to the Santa Maria Landfill. RTS currently has sixteen trucks hauling material to the landfill. For the week ending January 29, 2010, RTS hauled a total of 152 trips (approximately 3,471 tons of material). RTS has hauled a total of 37,688 loads of contaminated material to the landfill which is approximately 861,146 tons of material. RTS trucks continue to remain off of Betteravia Road between 4:30 and 5:30 pm as detailed in the SLO County Conditions. The first trucks do not leave the Field until after 8:00 am each morning and the last loads arrive at the Landfill at approximately 3:45 (the landfill closes at 4 pm). Recon begins work at 7:00 am. Each truck is loaded with approximately 24 tons or 16 to 18 cubic yards of material.
- Chevron staff continues to collect a baseline air sample at the onset of the excavation of contaminated material at each site and then as directed for safety purposes thereafter.
- At the end of each week, the entire portion of the TB8 Stockpile that was in any way affected by hauling activities is sprayed with Soil Sement to reduce emissions.

**Other Field Activities:**

- Chevron contractors continue to clear sand blown off of the Main Road. All collected sand is placed at the E4A or other approved stockpile.

- Chevron consultants continue to collect monitoring well samples throughout the Field according to their quarterly schedule.
- Weed species continue to be sprayed with herbicide or pulled throughout the lease.
- Chevron wildlife monitors conduct daily checks of the access roads prior to anyone entering the site.
- Chevron has implemented a safety-based program to monitor motor vehicle speeds on the lease.
- Chevron has proposed the installation of a walking path between the Main office and the Q4 borrow site.
- Sage Electric will be on-site to perform maintenance work for two days during one of the next two weekends.

#### **Sensitive Species Issues:**

- Chevron replaced the overnight lights at TB8 with automatic sensor lights in the hopes of reducing potential impacts to wildlife.
- Chevron biologists conducted their weekly survey of the TB8 Retention Basins this week on Monday.
- Chevron biologists continue to monitor restoration sites throughout the lease. Chevron biologists continue to survey plants and remove weeds at the D14, B12/C12, B1, B11, and M2 restoration sites. Chevron biologists also continue to install and repair sand fences and seed at active restoration sites. In December, California Conservation Corps volunteers were on-site to plant container plants at N12.
- Chevron biologists are conducting egg-mass surveys for California red-legged frogs at wetlands lease-wide.
- Cows continue to access the field via the Main Road or Santa Maria River east of the property. However, cattle have not been observed in the area of the Marsh Ponds or B Road wetland restoration sites since the installation of the fence across the Santa Maria River.



**Southwestern pond turtle observed on the edge of the Santa Maria estuary.**