

County of San Luis Obispo Onsite Environmental Coordinator  
Guadalupe Weekly Update 02-17-2010

Major construction/remediation activities continue at the Chevron Guadalupe Oil Field Remediation Site (Field) this week. The San Luis Obispo County Onsite Environmental Coordinator (OEC) continues to be present at the Field on a daily basis.

The following description of the weekly activities at the Field will give any of the interested parties an opportunity to identify additional requests in terms of special monitoring or approval requirements for any particular tasks on the Field. Significant issues are underlined>.

To help orient the placement of remediation activities, Figure 1 shows the Field and the location of all active project sites (marked in dark green for active excavation sites and blue for ongoing operations) where remediation activities are occurring.

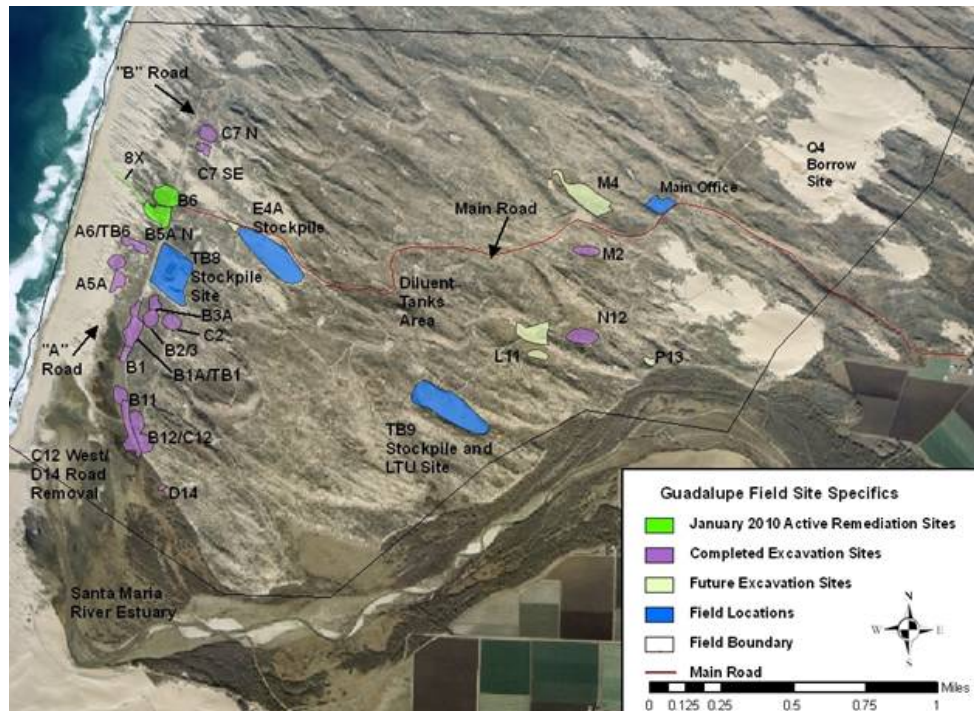


Figure 1. Active Remediation Sites

Here are the activities for the last two weeks:

**Excavation Activities:**

1. Sheetpile Installation at B5A, ongoing.
2. F11 access road and pad removal ongoing.
3. Q5 access road removal complete.
4. A Road Blow sand removal and road removal from the Santa Maria Estuary to the A2A Site, ongoing.
5. TB9 Stockpile 1 removal, ongoing.

**B5A Excavation Site**

Remediation activities continued this week at the B5A Excavation Site.

- Chevron/Recon completed the removal of clean overburden from the site. All clean overburden has been stockpiled at the approved E4A stockpile. As of January 29th, Recon has hauled approximately 45,295 c.y. of clean overburden from this site to the E4A Stockpile area.
- Sheetpile crew is currently installing sheets around the excavation area. The TB8 and TB9 portions of the Field are de-energized while the sheetpile crew is installing sheetpile across the B Road.
- Last week, the bypass road for personal vehicles was built on the eastern side of the excavation.

## **A Road Removal**

- Remediation activities were halted last week on the partial removal of the red rock/asphalt road between the Santa Maria Estuary and the A2A Pad (only a portion of the road was proposed for removal due to the potential for future remediation activities in the area that would require access). A small area of sump was discovered on the A11 pad (just South of the A2A pad) and was removed last week. Three production wells were also uncovered on the A11 pad. Since one of these wells was capped in the 1940s, it is required that the well be recapped. Due to schedule constraints with the Western snowy plover season (the road will be closed from March 1 to September 15), this work on the A Road will need to be done after the Western snowy plover nesting season. The portion of the road that has been removed was backfilled with clean and vegetated overburden stockpiled on the A road. Photos below.
- Several portions of the existing redrock road, asphalt, and base material was left in place along the A Road and adjoining pads to reduce impacts to foredune habitat and/or populations of the sensitive species, dundelion.
- The A Road removal will result in two portions of red rock and asphalt road to be "stranded": (1) a portion of the A Road several hundred feet long, between the A Road and the Loop Road which is predominantly covered with vegetated dunes and is acting as a partial barrier wall between the Estuary and the Marsh Ponds, and (2) a portion of road heading to the west of the A Road (originally accessing the 5X Site) which is currently covered with sand dunes and vegetated foredunes.
- Excavation activities along the A Road and adjoining pads will not be completed prior to the onset of the Western Snowy Plover breeding season and will resume in September.

## **TB1 Excavation Site**

Remediation activities were completed at the TB1 Excavation Site last month.

- Final contours of the TB1 site were approved last month. An electric fence has been installed around the perimeter of the wetland and restoration activities have commenced.

## **TB9-2 Stockpile Removal**

- Chevron/Recon have completed excavation, backfill, and contouring of the TB9-2 (upper) stockpile.
- Recon has begun removing the TB9-1(lower) stockpile (photo below). Recon/RTS is loading highway haul trucks directly from this site.
- Chevron reports finding and relocating a juvenile California red-legged frog from this site during the pre-disturbance frog survey. All vegetation on the stockpile has been removed and the ditches are drained to avoid attracting California red-legged frogs.

## **B6 Excavation Site**

- Chevron is using the B6 Excavation site as a temporary stockpile for vegetated overburden from the B5A excavation. Restoration activities at the western portion of the B6 Excavation Site will be delayed and will be done in conjunction with restoration of the B5A excavation that could occur as late as next Spring/Summer. Restoration activities have begun on the eastern portion of the B6 side (east of the B Road). Vegetation and vegetated overburden have been placed on the site.

## **Q5 Access Road Removal**

- Chevron completed removal of the Q5 access road last week. This week, vegetated overburden was used to backfill the area. This portion of the road will be restored in conjunction with the Q5 pad (removed in 2006).

## **F11 Pad and Access Road Removal**

- Chevron has temporarily halted remediation activities at the F11 pad and access road. A production well and diluent-contaminated sand were encountered during the removal of the pad site. Due to the depth to groundwater (more than 30 feet below the observed contamination), Chevron has coordinated with the RWQCB and will proceed with backfilling the site and restoring the remainder of the access road.

## Perimeter Fence Installation

- Chevron has only completed the segment of the site-wide perimeter fence from the beach to the D14 Restoration Site.



**A Road removal.**



**TB9 Stockpile: Highway trucks loaded directly from this site.**



**A Road backfilled and re-contoured.**



**B1 Created Wetland: evidence of erosion was recorded at several of the created wetland sites (B1, B12/C12, N12) during the last heavy rains.**

- RTS continues to haul diluent-contaminated material from the TB8 Stockpile site to the Santa Maria Landfill. RTS currently has eighteen trucks hauling material to the landfill. For the week ending February 12, 2010, RTS hauled a total of 212 trips (approximately 4,910 tons of material). RTS has hauled a total of 38,072 loads of contaminated material to the landfill which is approximately 870,074 tons of material. RTS trucks continue to remain off of Betteravia Road between 4:30 and 5:30 pm as detailed in the SLO County Conditions. The first trucks do not leave the Field until after 8:00 am each morning and the last loads arrive at the Landfill at approximately 3:45 (the landfill closes at 4 pm). Recon begins work at 6:45 am. Each truck is loaded with approximately 24 tons or 16 to 18 cubic yards of material.
- Chevron staff continues to collect a baseline air sample at the onset of the excavation of contaminated material at each site and then as directed for safety purposes thereafter.
- At the end of each week, the entire portion of the TB8 Stockpile that was in any way affected by hauling activities is sprayed with Soil Sement to reduce emissions.

## Other Field Activities:

- Chevron contractors continue to clear sand blown off of the Main Road. All collected sand is placed at the E4A or other approved stockpile.
- Chevron consultants are installing new pumps in the TB8 basins this week.

- Chevron consultants continue to collect monitoring well samples throughout the Field according to their quarterly schedule.
- Weed species continue to be sprayed with herbicide or pulled throughout the lease.
- Chevron wildlife monitors conduct daily checks of the access roads prior to anyone entering the site.
- Chevron has implemented a safety-based program to monitor motor vehicle speeds on the lease.
- Chevron has proposed the installation of a walking path between the Main office and the Q4 borrow site.
- This week, archaeologists and cultural monitors discovered a new cultural site adjacent to the known SLO-851 site. The site is being characterized and documented this week.
- Chevron subcontractors are on-site this week placing markers lease-wide for the aerial photograph, which is scheduled to be taken at the end of this week.

#### **Sensitive Species Issues:**

- Chevron replaced the overnight lights at TB8 with automatic sensor lights in the hopes of reducing potential impacts to wildlife.
- Chevron biologists conducted their weekly survey of the TB8 Retention Basins this week on Monday.
- Chevron biologists continue to monitor restoration sites throughout the lease. Chevron biologists continue to survey plants and remove weeds at the D14, B12/C12, B1, B11, and M2 restoration sites. Chevron biologists also continue to install and repair sand fences and seed at active restoration sites.
- Chevron biologists are conducting egg-mass surveys for California red-legged frogs at wetlands lease-wide.
- Chevron consultants are repairing signs posted on the beach for the impending Western snowy plover nesting season.
- Cows continue to access the field via the Main Road or Santa Maria River east of the property. However, cattle have not been observed in the area of the Marsh Ponds or B Road wetland restoration sites since the installation of the fence across the Santa Maria River.



**California red-legged frog amplexus at B2W2 Wetland.**