

County of San Luis Obispo Onsite Environmental Coordinator
Guadalupe Weekly Update 03-03-2010

Major construction/remediation activities continue at the Chevron Guadalupe Oil Field Remediation Site (Field) this week. The San Luis Obispo County Onsite Environmental Coordinator (OEC) continues to be present at the Field on a daily basis.

The following description of the weekly activities at the Field will give any interested parties an opportunity to identify additional requests in terms of special monitoring or approval requirements for any particular tasks on the Field.

Significant issues are underlined.

To help orient the placement of remediation activities, Figure 1 shows the Field and the location of all active project sites (marked in dark green for active excavation sites and blue for ongoing operations) where remediation activities are occurring.

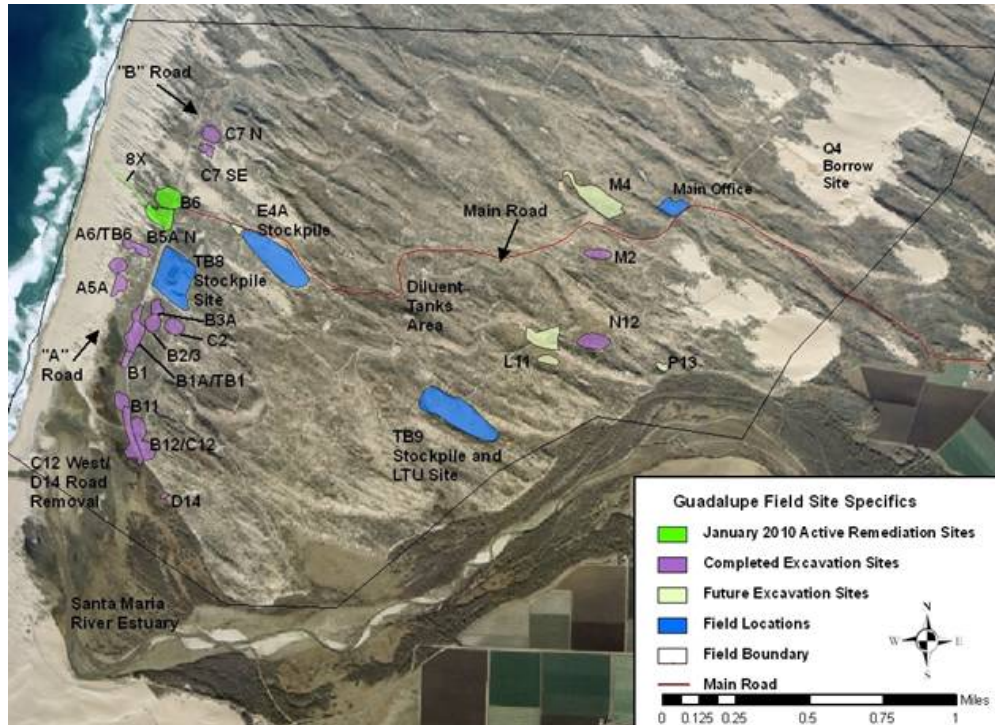


Figure 1. Active Remediation Sites

Here are the activities for the last two weeks:

Excavation Activities:

1. Dewatering well and line installation at B5A, ongoing.
2. F11 access road and pad removal ongoing.
3. A Road blow sand removal and road removal from the Santa Maria Estuary to the A2A Site, suspended until September 2010.
4. TB9 Stockpile 1 removal, ongoing.

B5A Excavation Site

Remediation activities continued this week at the B5A Excavation Site.

- Chevron/Recon completed the removal of clean overburden from the site. All clean overburden has been stockpiled at the approved E4A stockpile. As of January 29th, Recon has hauled approximately 45,295 c.y. of clean overburden from this site to the E4A Stockpile area.
- Sheetpile crew completed the installation of sheets around the excavation area.
- Recon is currently installing dewatering wells and the dewatering line in the B5A excavation. During installation of the dewatering wells along the southwest side of the excavation, contaminated material was discovered up to the

sheetpile wall above 1,000 ppm TPH indicating that the sheetpile wall may not encompass all of the contamination in this area.

- Since the excavation straddles the B Road, a bypass road for personal vehicles was built on the eastern side of the excavation.

A Road Removal

- Remediation activities were halted last week on the partial removal of the red rock/asphalt road between the Santa Maria Estuary and the A2A Pad (only a portion of the road was proposed for removal due to the potential for future remediation activities in the area that would require access). The small area of sump, discovered on the A11 pad (just south of the A2A pad) was removed. Three production wells were also uncovered on the A11 pad. Since one of these wells was capped in the 1940s, it is required that the well be recapped. Due to schedule constraints with the Western snowy plover season (the road will be closed from March 1 to September 15), this work on the A Road will need to be done after the Western snowy plover nesting season. The portion of the road that has been removed was backfilled with clean and vegetated overburden stockpiled on the A road.
- Several portions of the existing redrock road, asphalt and base material was left in place along the A Road and adjoining pads to reduce impacts to foredune habitat and/or populations of the sensitive species, dandelion.

TB9-1 Stockpile Removal

- Recon has begun removing the TB9-1(lower) stockpile. Recon/RTS is loading highway haul trucks directly from this site.
- Chevron reports finding and relocating a juvenile California red-legged frog from this site during the pre-disturbance frog survey. All vegetation on the stockpile has been removed and the ditches are drained to avoid attracting California red-legged frogs.

B6 Excavation Site

- Chevron is using the B6 Excavation site as a temporary stockpile for vegetated overburden from the B5A excavation. Restoration activities at the western portion of the B6 Excavation Site will be delayed and will be done in conjunction with restoration of the B5A excavation that could occur as late as next Spring/Summer. Restoration activities have begun on the eastern portion of the B6 side (east of the B Road). Vegetation and vegetated overburden have been placed on the site.

F11 Pad and Access Road Removal

- Chevron resumed remediation activities at the F11 pad and access road. A production well and diluent-contaminated sand were encountered during the removal of the pad site. Due to the depth to groundwater (more than 30 feet below the observed contamination), Chevron has coordinated with the RWQCB and will proceed with backfilling the site and restoring the remainder of the access road.
- The pad site was backfilled and vegetated overburden was placed on top. The access road is currently being removed.

Perimeter Fence Installation

- Chevron has only completed the segment of the site-wide perimeter fence from the beach to the D14 Restoration Site.



F11 Pad and access road removal.



TB1 Created Wetland: some of the 1,000s of new plants planted in the created wetland sites this year.

- RTS continues to haul diluent-contaminated material from the TB8 Stockpile or TB9 stockpile sites to the Santa Maria Landfill. RTS currently has eighteen trucks hauling material to the landfill. For the week ending February 26, 2010, RTS hauled a total of 194 trips (approximately 4,464 tons of material). RTS has hauled a total of 38,495 loads of contaminated material to the landfill which is approximately 879,667 tons of material. RTS trucks continue to remain off of Betteravia Road between 4:30 and 5:30 pm as detailed in the SLO County Conditions. The first trucks do not leave the Field until after 8:00 am each morning and the last loads arrive at the Landfill at approximately 3:45 (the landfill closes at 4 pm). Recon begins work at 6:45 am. Each truck is loaded with approximately 24 tons or 16 to 18 cubic yards of material.
- Chevron staff continues to collect a baseline air sample at the onset of the excavation of contaminated material at each site and then as directed for safety purposes thereafter.
- At the end of each week, the entire portion of the TB8 Stockpile that was in any way affected by hauling activities is sprayed with Soil Sement to reduce emissions.

Other Field Activities:

Chevron contractors continue to clear sand blown off of the Main Road. All collected sand is placed at the E4A or other approved stockpile.

- Chevron consultants have installed new pumps in the TB8 basins this week, therefore reducing the amount of water typically left standing in these basins.
- Chevron consultants continue to collect monitoring well samples throughout the Field according to their quarterly schedule.
- Weed species continue to be sprayed with herbicide or pulled throughout the lease.
- Chevron wildlife monitors conduct daily checks of the access roads prior to anyone entering the site.
- Chevron has implemented a safety-based program to monitor motor vehicle speeds on the lease.
- Chevron has proposed the installation of a walking path between the Main office and the Q4 borrow site.
- This week, archaeologists and cultural monitors completed site characterization and documentation of a new cultural site adjacent to the known SLO-851 site.
- Chevron subcontractors are on-site this week removing markers lease-wide for the aerial photograph, which was taken last week.

Sensitive Species Issues:

- Chevron replaced the overnight lights at TB8 with automatic sensor lights in the hopes of reducing potential impacts to wildlife.
- Chevron biologists conducted their weekly survey of the TB8 Retention Basins this week on Wednesday.

- Chevron biologists continue to monitor restoration sites throughout the lease. Chevron biologists continue to survey plants and remove weeds at the D14, B12/C12, B1, B11, and M2 restoration sites. Chevron biologists also continue to install and repair sand fences and seed at active restoration sites.
- Chevron biologists are conducting egg-mass surveys for California red-legged frogs at wetlands lease-wide.
- The beach was closed on Monday, March 1, 2010 for the start of the Western snowy plover breeding season. A snowy plover biologist will survey the site three times per week. To prepare for the beach closure, Chevron employees completed well sampling and sign repairs this week.
- On Friday, many employees participated in a beach clean-up of trash, removing several truckloads of trash from the beach.
- Chevron consultants are repairing signs posted on the beach for the impending Western snowy plover nesting season.
- Cows continue to access the field via the Main Road or Santa Maria River east of the property. However, cattle have not been observed in the area of the Marsh Ponds or B Road wetland restoration sites since the installation of the fence across the Santa Maria River.



California red-legged frog egg mass at the D14 Created Wetland.