

County of San Luis Obispo Onsite Environmental Coordinator
Guadalupe Weekly Update 03-10-2010

Major construction/remediation activities continue at the Chevron Guadalupe Oil Field Remediation Site (Field) this week. The San Luis Obispo County Onsite Environmental Coordinator (OEC) continues to be present at the Field on a daily basis.

The following description of the weekly activities at the Field will give any of the interested parties an opportunity to identify additional requests in terms of special monitoring or approval requirements for any particular tasks on the Field. Significant issues are underlined.

To help orient the placement of remediation activities, Figure 1 shows the Field and the location of all active project sites (marked in dark green for active excavation sites and blue for ongoing operations) where remediation activities are occurring.

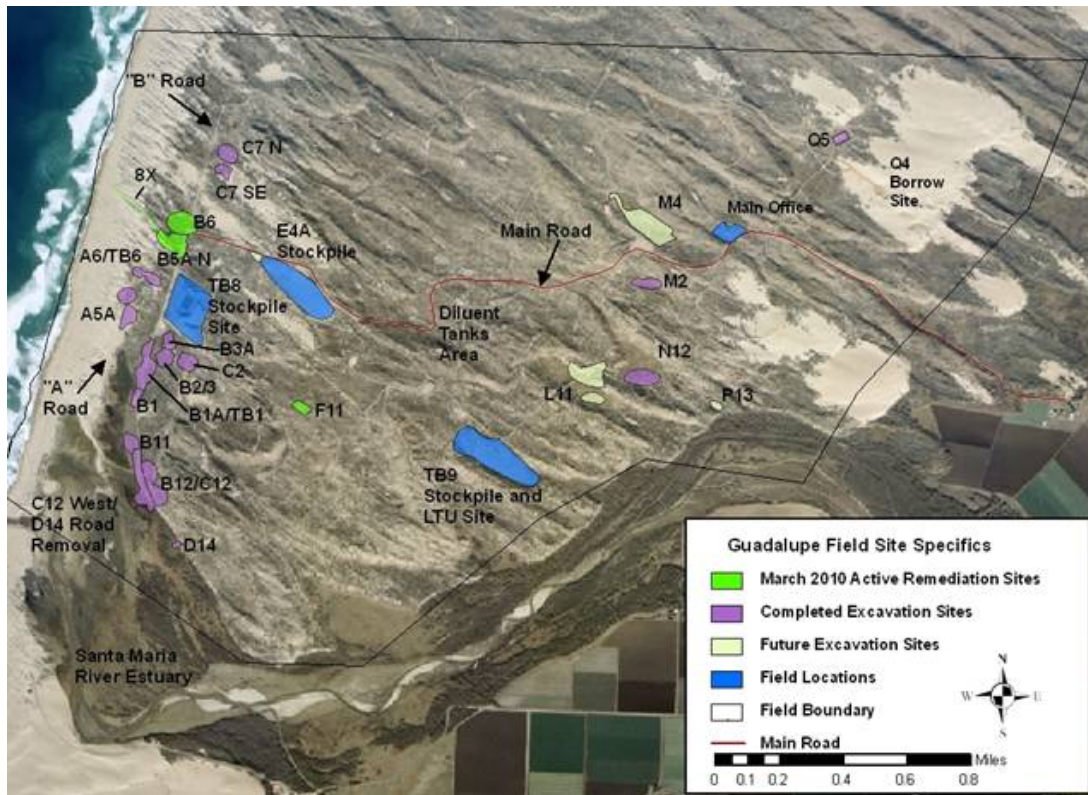


Figure 1. Active Remediation Sites

Here are the activities for the last week:

Excavation Activities:

1. Dewatering well and line installation at B5A, ongoing.
2. F11 access road and pad removal, complete.
3. A Road Blow sand removal and road removal from the Santa Maria Estuary to the A2A Site, suspended until September 2010.
4. TB9 Stockpile 1 removal, ongoing.
5. G1A pad, oil spray, and access road removal, ongoing.

B5A Excavation Site

Remediation activities continued this week at the B5A Excavation Site.

- Recon is currently installing dewatering wells and the dewatering line in the B5A excavation. During installation of the dewatering wells along the southwest side of the excavation, contaminated material was discovered up to the sheetpile wall above 1,000 ppm TPH indicating that the sheetpile wall may not encompass all of the contamination in this area. Hand auger samples from approximately 15-20 feet outside the sheetpile wall were collected last week;

further step-out samples will be necessary; Chevron is currently coordinating with the RWQCB to determine additional data needs and approach.

- Since the excavation straddles the B Road, a bypass road for personal vehicles was built on the eastern side of the excavation.

TB9-1 Stockpile Removal

- Recon has begun removing the TB9-1(lower) stockpile. Recon/RTS is loading highway haul trucks directly from this site.

B6 Excavation Site

- Chevron is using the B6 Excavation site as a temporary stockpile for vegetated overburden from the B5A excavation. Restoration activities at the western portion of the B6 Excavation Site will be delayed and will be done in conjunction with restoration of the B5A excavation that could occur as late as next Spring/Summer. Restoration activities have begun on the eastern portion of the B6 side (east of the B Road).

F11 Pad and Access Road Removal

- Chevron completed remediation activities at the F11 pad and access road. A production well and diluent-contaminated sand were encountered during the removal of the pad site. Due to the depth to groundwater (more than 30 feet below the observed contamination), Chevron coordinated with the RWQCB and proceeded with backfilling the site and restoring the remainder of the access road.
- The pad site and access road were backfilled and vegetated overburden was placed on top.

G1A Pad, Oil Spray, and Access Road Removal

- Chevron began remediation activities at the G1A pad, adjacent oil spray and access road. This week, construction fence was installed and vegetation plucking began.

M12 Pipeline Removal

- Chevron is removing abandoned pipelines at the M12 site in preparation of remediation activities on this site. The pipelines are both inside and outside the future M12 excavation site. Pipelines are hot-tapped and cut on-site and loaded into roll-off bins staged on the M12 pad.

Perimeter Fence Installation

- Chevron has only completed the segment of the site-wide perimeter fence from the beach to the D14 Restoration Site. Contractors are currently on-site assessing the route and construction is scheduled to resume by the end of the month.



F11 Pad and access road: final contours.



B5A: collecting hand augers outside the sheetpile wall to characterize extent of contamination south of remediation site.



TB9 Stockpile Site: contaminated storm-water runoff overflowed containment.



M12 Pipeline removal.

- RTS continues to haul diluent-contaminated material from the TB8 Stockpile or TB9 stockpile sites to the Santa Maria Landfill. RTS currently has eighteen trucks hauling material to the landfill. For the week ending February 26, 2010, RTS hauled a total of 194 trips (approximately 4,464 tons of material). RTS has hauled a total of 38,495 loads of contaminated material to the landfill which is approximately 879,667 tons of material. RTS trucks continue to remain off of Betteravia Road between 4:30 and 5:30 pm as detailed in the SLO County Conditions. The first trucks do not leave the Field until after 8:00 am each morning and the last loads arrive at the Landfill at approximately 3:45 (the landfill closes at 4 pm). Recon begins work at 6:45 am. Each truck is loaded with approximately 24 tons or 16 to 18 cubic yards of material.
- Chevron staff continues to collect a baseline air sample at the onset of the excavation of contaminated material at each site and then as directed for safety purposes thereafter.
- At the end of each week, the entire portion of the TB8 Stockpile that was in any way affected by hauling activities is sprayed with Soil Sement to reduce emissions.

Other Field Activities:

- Chevron reports that over 8,000 wetland plants were planted (all grown at the on-site growing facility) this year at the active wetland restoration sites.
- Chevron contractors continue to clear sand blown off of the Main Road. All collected sand is placed at the E4A or other approved stockpile.
- Chevron consultants have installed new pumps in the TB8 basins this week, therefore reducing the amount of water typically left standing in these basins.
- Chevron consultants continue to collect monitoring well samples throughout the Field according to their quarterly schedule.
- Weed species continue to be sprayed with herbicide or pulled throughout the lease.
- Chevron wildlife monitors conduct daily checks of the access roads prior to anyone entering the site.
- Chevron has implemented a safety-based program to monitor motor vehicle speeds on the lease.
- Chevron has proposed the installation of a walking path between the Main office and the Q4 borrow site.
- California Conservation Corps volunteers were on-site last Thursday and Friday, planting plants from the growing facility at the TB1 site.
- Last week, during a heavy rain downpour, the sump pump at TB9 basin overflowed with a large amount of affected water on the ground surface (see photo above).
- A small oil seep surfaced approximately 100 feet northeast of the B1 pond, outside the excavation footprint. This material was removed by shovel into the back of an ORV.

Sensitive Species Issues:

- Chevron replaced the overnight lights at TB8 with automatic sensor lights in the hopes of reducing potential impacts to wildlife.
- Chevron biologists did not conduct their weekly survey of the TB8 Retention Basins last week due to rain.
- Chevron biologists continue to monitor restoration sites throughout the lease. Chevron biologists continue to survey plants and remove weeds at the D14, B12/C12, B1, B11, and M2 restoration sites. Chevron biologists also continue to install and repair sand fences and seed at active restoration sites.
- Chevron biologists are conducting egg-mass surveys for California red-legged frogs at wetlands lease-wide.
- The beach was closed on Monday, March 1, 2010 for the start of the Western snowy plover breeding season. A snowy plover biologist surveys the site three times per week. Currently, there are no active nests.
- Chevron consultants are repairing signs posted on the beach for the impending Western snowy plover nesting season.
- Cows continue to access the field via the Main Road or Santa Maria River east of the property. However, cattle have not been observed in the area of the Marsh Ponds or B Road wetland restoration sites since the installation of the fence across the Santa Maria River.



TB1 Created Wetland: some of the 1,000s of new plants planted in the created wetland sites this year.