

County of San Luis Obispo Onsite Environmental Coordinator  
Guadalupe Weekly Update 03-24-2010

Major construction/remediation activities continue at the Chevron Guadalupe Oil Field Remediation Site (Field) this week. The San Luis Obispo County Onsite Environmental Coordinator (OEC) continues to be present at the Field on a daily basis.

The following description of the weekly activities at the Field will give any of the interested parties an opportunity to identify additional requests in terms of special monitoring or approval requirements for any particular tasks on the Field. Significant issues are underlined.

Chevron reports a potential release near the old 5X Excavation Site. There has been no observable sheen in the ocean, however, Chevron reports detecting a strong hydrocarbon odor in the surf zone near two monitoring wells in the vicinity. Chevron is continuing their investigation and has made notifications the USCG, OSPR and the MACC agencies. Additional actions taken or planned include sampling the water and placing t-posts and caution tape around the area to discourage fishermen and the public from entering.

To help orient the placement of remediation activities, Figure 1 shows the Field and the location of all active project sites (marked in dark green for active excavation sites and blue for ongoing operations) where remediation activities are occurring.

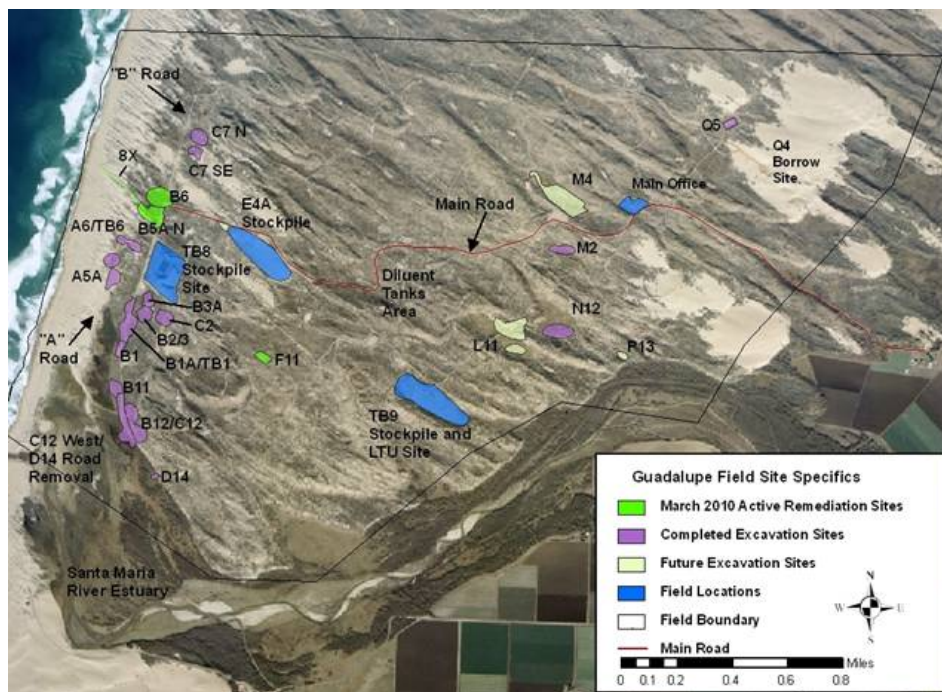


Figure 1. Active Remediation Sites

Here are the activities for the last week:

**Excavation Activities:**

1. Dewatering at B5A temporarily stopped.
2. TB9 Stockpile 1 removal, temporarily stopped; TB8 removal/hauling ongoing.
3. G1A pad, oil spray, and access road removal, ongoing.
4. M12 Site sheetpile installation, ongoing.

**B5A Excavation Site**

Remediation activities continued this week at the B5A Excavation Site.

- Recon has installed dewatering wells and the dewatering line in the B5A excavation. The dewatering system is currently not running. During installation of the dewatering wells along the southwest side of the excavation, contaminated material was discovered up to the sheetpile wall above 1,000 ppm TPH indicating that the sheetpile wall does not encompass all of the contamination in this area. Hand auger samples from approximately 15-20 feet outside the sheetpile wall were collected last week confirming that the contamination extends beyond the sheetpile wall (photo below); Chevron is currently coordinating with the RWQCB to determine additional data needs and approach.

- Since the excavation straddles the B Road, a bypass road for personal vehicles was built on the eastern side of the excavation.

### **TB9-1 Stockpile Removal**

- Recon began removing the TB9-1(lower) stockpile. Recon/RTS was loading highway haul trucks directly from this site and will continue after the B Road is shut down in order to excavate the B5A Site.

### **B6 Excavation Site**

- Chevron is using the B6 Excavation site as a temporary stockpile for vegetated overburden from the B5A excavation. Restoration activities at the western portion of the B6 Excavation Site will be delayed and will be done in conjunction with restoration of the B5A excavation that could occur as late as next Spring/Summer. Restoration activities have begun on the eastern portion of the B6 side (east of the B Road).

### **G1A Pad, Oil Spray, and Access Road Removal**

- Chevron began remediation activities at the G1A pad, adjacent oil spray and access road. Last week, the vegetation was plucked from the site. This week, the oil spray and pad removal continues.
- During the oil spray removal, Chevron reports observing diluent affected material at the lower pad site at this location.

### **M12 Excavation Site**

- Chevron removed abandoned pipelines at the M12 site in preparation of remediation activities on this site. The pipelines were both inside and outside the future M12 excavation site.
- Last week, Chevron installed silt fence in preparation for sheetpile installation. Biologists salvaged 14 La Graciosa thistle plants within the construction zone. Most plants were immediately planted in the N12 wetland; three seedlings were taken to the growing facility.
- Recon is currently installing silt fence and dewatering system at the site.

### **Perimeter Fence Installation**

- Chevron has only completed the segment of the site-wide perimeter fence from the beach to the D14 Restoration Site. Contractors are currently on-site assessing the route and construction is scheduled to resume by the end of the month.



**G1A Oil spray removal.**



**B5A: location of contaminated material outside sheetpile wall; a portion of the contamination extends below the large sand dune south west of the current excavation site.**



**M12 Vegetation removal in preparation for sheetpile installation.**

- RTS continues to haul diluent-contaminated material from the TB8 Stockpile or TB9 stockpile sites to the Santa Maria Landfill. RTS currently has eighteen trucks hauling material to the landfill. For the week ending March 19, 2010, RTS hauled a total of 265 trips (approximately 5,969 tons of material). RTS has hauled a total of 39,270 loads of contaminated material to the landfill which is approximately 897,331 tons of material. RTS trucks continue to remain off of Betteravia Road between 4:30 and 5:30 pm as detailed in the SLO County Conditions. The first trucks do not leave the Field until after 8:00 am each morning and the last loads arrive at the Landfill at approximately 3:45 (the landfill closes at 4 pm). Recon begins work at 7:00 am. Each truck is loaded with approximately 24 tons or 16 to 18 cubic yards of material.
- Chevron staff continues to collect a baseline air sample at the onset of the excavation of contaminated material at each site and then as directed for safety purposes thereafter.
- At the end of each week, any portion of the TB8 and/or TB9 stockpiles that were in any way affected by hauling activities is sprayed with Soil Sement to reduce emissions.

#### **Other Field Activities:**

- Chevron contractors continue to clear sand blown off of the Main Road. All collected sand is placed at the E4A or other approved stockpile.
- Chevron consultants continue to collect monitoring well samples throughout the Field according to their quarterly schedule.
- Weed species continue to be sprayed with herbicide or pulled throughout the lease.
- Chevron wildlife monitors conduct daily checks of the access roads prior to anyone entering the site.
- Chevron has implemented a safety-based program to monitor motor vehicle speeds on the lease.

#### **Sensitive Species Issues:**

- Chevron biologists conducted their weekly survey of the TB8 Retention Basins last week; no animals were observed.
- Chevron biologists continue to monitor restoration sites throughout the lease. Chevron biologists continue to survey plants and remove weeds at the D14, B12/C12, B1, B11, and M2 restoration sites. Chevron biologists also continue to install and repair sand fences and seed at active restoration sites.
- Chevron biologists are conducting egg-mass surveys for California red-legged frogs at wetlands lease-wide.
- The beach was closed on Monday, March 1, 2010 for the start of the Western snowy plover breeding season. A snowy plover biologist surveys the site three time per week. Currently, there are no active nests.

- Cows continue to access the field via the Main Road or Santa Maria River east of the property. However, cattle have not been observed in the area of the Marsh Ponds or B Road wetland restoration sites since the installation of the fence across the Santa Maria River.



**Coast horned lizard observed at the G1A Site.**