

County of San Luis Obispo Onsite Environmental Coordinator
Guadalupe Weekly Update 06-9-2010

Some construction/remediation activities have resumed at the Chevron Guadalupe Oil Field Remediation Site (Field) this week. The San Luis Obispo County Onsite Environmental Coordinator (OEC) continues to be present at the Field on a daily basis.

The following description of the weekly activities at the Field will give any of the interested parties an opportunity to identify additional requests in terms of special monitoring or approval requirements for any particular tasks on the Field. Significant issues are underlined.

- As previously reported, a hydrocarbon release continues to be monitored near the old 5X Excavation Site. Sampling efforts continue to record TPH concentrations in some water and interstitial samples; odor continues to be recorded intermittently on the beach. A Sand Crab Sampling Plan was implemented on May 17 and 18 to evaluate potential risks to ecological receptors in the vicinity of the release and to determine whether additional information is needed for additional actions. The data from the collected samples is expected to be available sometime in the upcoming week. Chevron will continue to conduct a visual and odor survey of the beach area three times a week. Additional samples may be collected if a sheen or strong, persistent odor is detected. Surveys continue to be conducted under the continued direction of the western snowy plover monitor.
- The western snowy plover monitor reported that the snowy plover nest closest to the main access corridor to the beach (within 75 feet of ORV trail used at least three times a week to collect water, interstitial, and sand crab samples) successfully hatched this last week.

To help orient the placement of remediation activities, Figure 1 shows the Field and the location of all active project sites (marked in dark green for active excavation sites and blue for ongoing operations) where remediation activities are occurring.

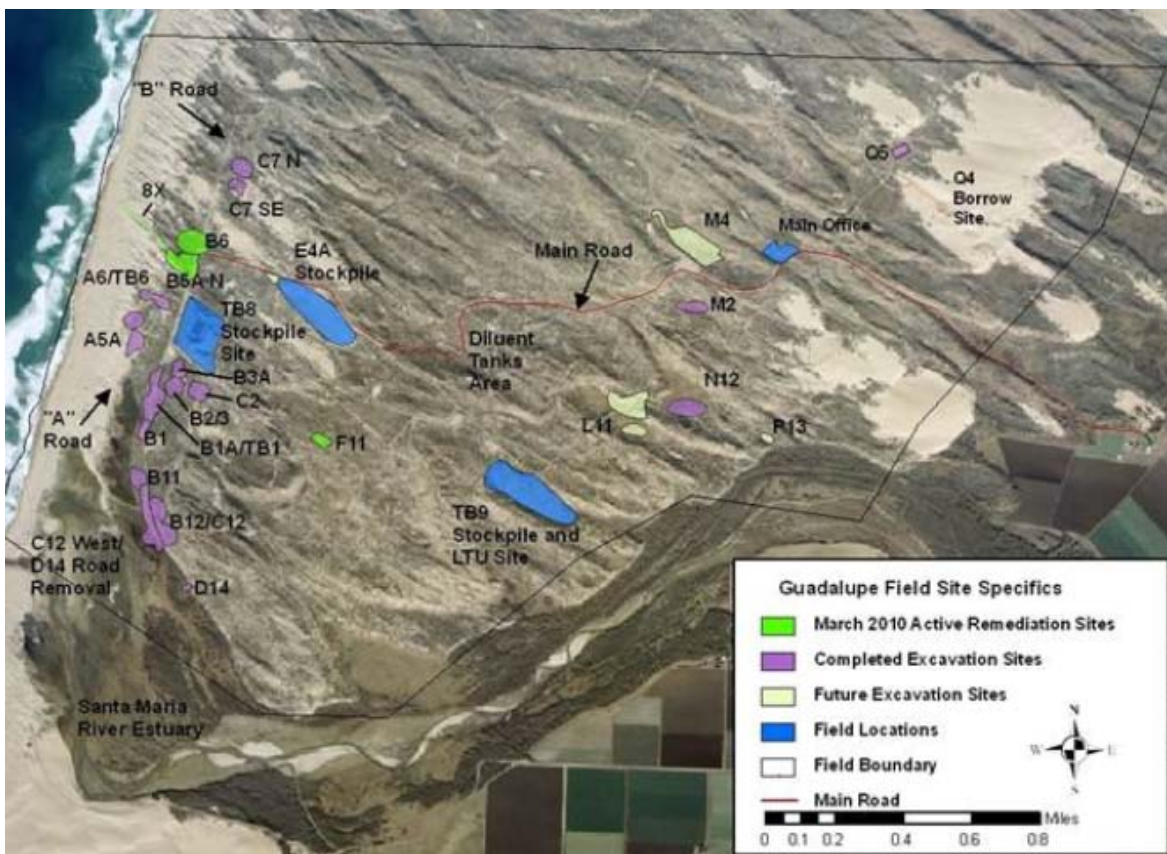


Figure 1. Active Remediation Sites

Here are the activities for the last week:

Excavation Activities:

Most remediation activities at the Field, except for hauling to the landfill, have temporarily stopped during the transition phase with Chevron's new remediation and environmental contractors.

Chevron is preparing the TB9 Stockpile site for future hauling activities. The new construction contractor, Entact, has designed and installed a new decontamination pad (photos below) outside the TB9 stockpile that decreases the threat of contaminated material being transported outside the work area.



Building a new and improved Decontamination Pad outside the TB9 Stockpile Site.



The finished Decon Pad outside the TB9 Stockpile Site.

Hauling Activities

- RTS continues to haul diluent-contaminated material from the TB8 Stockpile to the Santa Maria Landfill. RTS currently has twelve trucks hauling material to the landfill. For the week ending June 4, 2010, RTS hauled a total of 118 trips (approximately 2,679 tons of material). RTS has hauled a total of 40,169 loads of contaminated material to the landfill which is approximately 917,532 tons of material. RTS trucks continue to remain off of Betteravia Road between 4:30 and 5:30 pm as detailed in the SLO County Conditions. The first trucks do not leave the Field until after 8:00 am each morning and the last loads arrive at the Landfill at approximately 3:45 (the landfill closes at 4 pm). Entact/RTS begins work at 6:45 am. Each truck is loaded with approximately 24 tons or 16 to 18 cubic yards of material.

B5A Excavation Site

- Hauling activities at this site will not begin until there is resolution concerning the contaminated material outside the sheetpile wall. Chevron has prepared and will soon submit a revised plan to partially remove this contaminated material. Chevron will be coordinating with the RWQCB to determine the next course of action at this site.
- Entact has begun preparing this site for hauling activities by installing a new decontamination pad and loading pad.

G1A Pad, Oil Spray and Access Road Removal

- Diluent was discovered during the oil spray removal at this site and much of it was removed and hauled to TB8. After coordinating with the RWQCB, Chevron halted the excavation of diluent-contaminated material due to the depth of contamination and backfilled over the remaining contaminated sand.

M12 Excavation Site

- Remediation activities at this site have temporarily ceased. Chevron does not plan on conducting any excavation activities at this site until the B5A Site is well underway.
- Entact has removed the vegetation that has grown up within the sheetpile wall at this site to reduce the chance for wildlife becoming established in the work area.

Perimeter Fence Installation

- Chevron has only completed the segment of the site-wide perimeter fence from the beach to the D14 Restoration Site.
- McNabb Contractors have been hired and are scheduled to begin installing fence on the North-east boundary of the property at the end of June.

Other Field Activities:

- Chevron consultants continue to collect monitoring well samples throughout the Field according to their quarterly schedule.
- Chevron wildlife monitors conduct daily checks of the access roads prior to anyone entering the site.

Sensitive Species Issues:

- Chevron biologists continue to conduct their weekly survey of the TB8 Retention Basins.
- Chevron biologists continue to monitor restoration sites throughout the lease.
- The western snowy plover monitor continues to conduct surveys of the beach three times a week. The western snowy plover monitor reports that there has been a total of 29 western snowy plover nests observed this season. Of those 29 nests, 14 have been lost (to predation or wind), 9 nests are still active, and 6 nests have successfully hatched.

- Cows continue to access the field via the Main Road or Santa Maria River east of the property. However, cattle have not been observed in the area of the Marsh Ponds or B Road wetland restoration sites since the installation of the fence across the Santa Maria River.



Life at Guadalupe.