

County of San Luis Obispo Onsite Environmental Coordinator
Guadalupe Weekly Update 06-23-2010

Construction/remediation activities continue at the Chevron Guadalupe Oil Field Remediation Site (Field) this week. The San Luis Obispo County Onsite Environmental Coordinator (OEC) continues to be present at the Field on a daily basis.

The following description of the weekly activities at the Field will give any of the interested parties an opportunity to identify additional requests in terms of special monitoring or approval requirements for any particular tasks on the Field. Significant issues are underlined.

- As previously reported, a hydrocarbon release continues to be monitored near the old 5X Excavation Site. Monitoring efforts comprised of visual and odor surveys continue on the beach area three times a week. The Sand Crab Sampling data (collected on May 17 and 18) is still not yet available. Plan was designed to evaluate potential risks to ecological receptors in the vicinity of the release and to determine whether additional information is needed for additional actions. Additional samples may be collected if a sheen or strong, persistent odor is detected. Surveys continue to be conducted under the continued direction of the western snowy plover monitor.
- All of the contaminated material stockpiled at the TB8 Stockpile Site has been hauled to the Santa Maria landfill.

To help orient the placement of remediation activities, Figure 1 shows the Field and the location of all active project sites (marked in dark green for active excavation sites and blue for ongoing operations) where remediation activities are occurring.

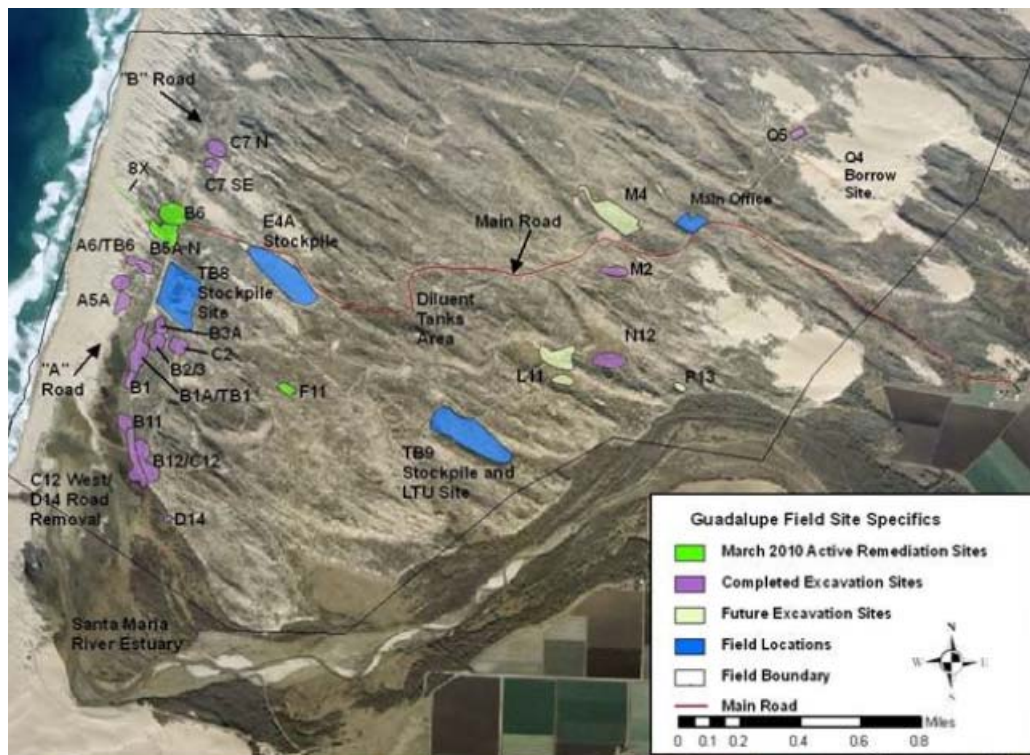


Figure 1. Active Remediation Sites

Here are the activities for the last week:

Excavation Activities:

Most remediation activities on the Field, except for hauling to the landfill, have temporarily stopped during the transition phase with Chevron's new remediation and environmental contractors.

Chevron is currently using the TB9 Stockpile site for hauling activities. The new construction contractor, Entact, has designed and installed a new decontamination pad (photos below) outside the TB9 stockpile that decreases the threat of contaminated material being transported outside the work area.

B5A Excavation Site

Chevron construction contractor, Entact, has begun preparing the B5A Excavation site for excavation activities: the dewatering system will be turned on to dewater the site, the decontamination pad (photo below) and loading pad have been constructed, and Chevron is in the process of receiving approvals for the excavation of dirty material outside the sheetpile wall (photo below).

Chevron has received agency approval to excavate as much of the contaminated material outside the sheetpile wall that is feasible without affecting the dune slope to the south (photo of dune below).

M3 Stockpile Site and Loading Zone

Chevron construction contractor, Entact is constructing the new M3 Stockpile site and Loading Zone (photo below). This site will be eventually used to stockpile contaminated material from inland excavations sites (M4 and possibly I-II) and to direct load haul trucks as opposed to loading them at TB8.



Building a new and improved Decontamination Pad within the B5A Excavation Site.



Loading haul trucks at the TB9 Stockpile Site.



View of dune to the immediate south of B5A Site (location of dirty material that will be excavated outside the B5A Sheetpile wall).



Constructing the new M3 Stockpile site and Loading Zone.

Hauling Activities

- RTS hauled diluent-contaminated material from the TB8 and the TB9 Stockpile Sites to the Santa Maria Landfill. As of June 15th, all of the stockpiled material at the TB8 site had been hauled to the landfill. RTS currently has twelve trucks hauling material to the landfill. For the week ending June 18, 2010, RTS hauled a total of 157 trips (approximately 3,634 tons of material). RTS has hauled a total of 40,466 loads of contaminated material to the landfill which is approximately 924,388 tons of material. RTS trucks continue to remain off of Betteravia Road between 4:30 and 5:30 pm as detailed in the SLO County Conditions. The first trucks do not leave the Field until after 8:00 am each morning and the last loads arrive at the Landfill at approximately 3:45 (the landfill closes at 4 pm). Entact/RTS begins work at 6:00 am. Each truck is loaded with approximately 24 tons or 16 to 18 cubic yards of material.

G1A Pad, Oil Spray, and Access Road Removal

- Diluent was discovered during the oil spray removal at this site and much of it was removed and hauled to TB8. After coordinating with the RWQCB Chevron halted the excavation of diluent-contaminated material due to the depth of contamination and backfilled over the remaining contaminated sand.

M12 Excavation Site

- Remediation activities at this site have temporarily ceased. Chevron does not plan on conducting any excavation activities at this site until the B5A Site is well underway.

Perimeter Fence Installation

- Chevron has only completed the segment of the site-wide perimeter fence from the beach to the D14 Restoration Site.
- Installation of the perimeter fence has been temporarily delayed so as to address the need for further analysis of the potential presence of the EI Segundo Blue butterfly on the Project Site.

Other Field Activities:

- Chevron consultants continue to collect monitoring well samples throughout the Field according to their quarterly schedule.
- Chevron wildlife monitors conduct daily checks of the access roads prior to anyone entering the site.
- Pacific treefrog tadpoles were observed in a stormwater collection bin at the old decon pad. The bins at the decon site also contained water washed off of contaminated equipment and therefore, was itself contaminated (sheen was visible on several occasions). Approximately 60 tadpoles were collected by hand nets, washed in fresh water, and relocated to the Marsh Ponds. Chevron is in the process of designing a water collection system in this area that will eventually eliminate the need for these attractive nuisances and exposure risks.

Sensitive Species Issues:

- Chevron biologists continue to conduct their weekly survey of the TB8 Retention Basins.
- Chevron biologists continue to monitor restoration sites throughout the lease.
- The western snowy plover monitor continues to conduct surveys of the beach three times a week. The western snowy plover monitor reports that there has been a total of 29 western snowy plover nests observed this season. Of those 29 nests, 14 have been lost (to predation or wind), 9 nests are still active, and 6 nests have successfully hatched.
- Cows continue to access the field via the Main Road or Santa Maria River east of the property. However, cattle have not been observed in the area of the Marsh Ponds or B Road wetland restoration sites since the installation of the fence across the Santa Maria River.



Life at Guadalupe: three house finch nestlings outside the Field Office.