

County of San Luis Obispo Onsite Environmental Coordinator
Guadalupe Weekly Update 07-8-2010

Construction/remediation activities continue at the Chevron Guadalupe Oil Field Remediation Site (Field) this week. The San Luis Obispo County Onsite Environmental Coordinator (OEC) continues to be present at the Field on a daily basis.

The following description of the weekly activities at the Field will give any of the interested parties an opportunity to identify additional requests in terms of special monitoring or approval requirements for any particular tasks on the Field. Significant issues are underlined.

- As previously reported, a hydrocarbon release continues to be monitored near the old 5X Excavation Site. Monitoring efforts comprised of visual and odor surveys continue on the beach area three times a week. Raw data for the Sand Crab sampling data (collected on May 17 and 18) has been provided to CDFG. Plan was designed to evaluate potential risks to ecological receptors in the vicinity of the release and to determine whether additional information is needed for additional actions. Additional samples may be collected if a sheen or strong, persistent odor is detected. Surveys continue to be conducted under the direction of the western snowy plover monitor.
- On Saturday, July 3rd, Chevron reported that a check valve malfunctioned at the Diluent Tanks (DT) area that resulted in a spill of water and diluent from one of the tanks (Chevron estimated less than ten barrels of product). All of the liquid was contained in the secondary containment surrounding the Tank.

To help orient the placement of remediation activities, Figure 1 shows the Field and the location of all active project sites (marked in dark green for active excavation sites and blue for ongoing operations) where remediation activities are occurring.

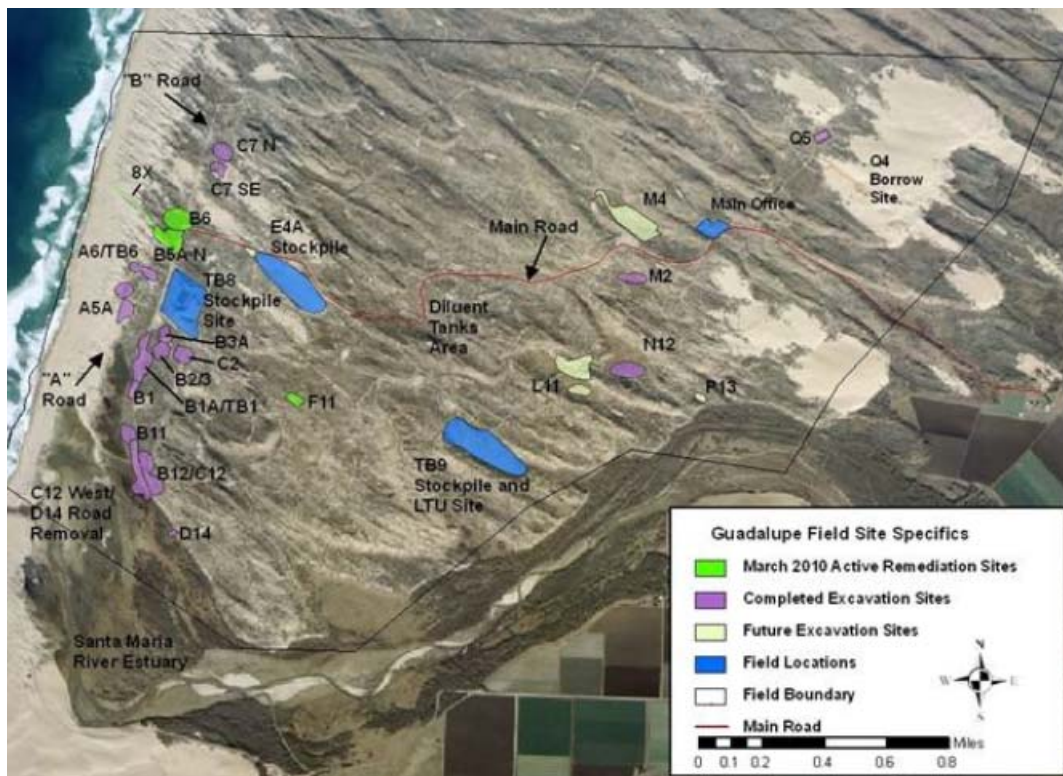


Figure 1. Active Remediation Sites

Here are the activities for the last week:

Excavation Activities:

B5A Excavation Site

Chevron construction contractor, Entact, has completed the excavation of contaminated material outside the B5A Sheetpile wall. Excavation began on June 28 and was completed on July 7. The excavation activities included removing a portion of the known contamination outside the sheetpile wall in a series of six trenches running perpendicular to the sheetpile wall, collecting a soil sample from the bottom of each excavated trench, and immediately backfilling with clean sand.

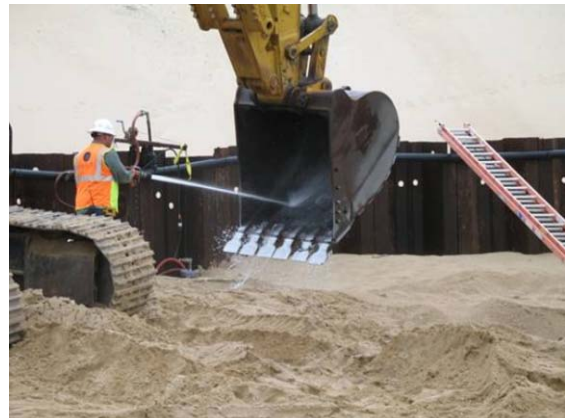
Contaminated soil and free floating product was visible at each of the six excavated trenches. Entact was able to excavate contaminated material up to approximately 12 to 15 feet past the sheetpile wall. Further excavation was restricted due to the presence of a natural dune immediately to the south of the excavated trenches.

M3 Stockpile Site and Loading Zone

Chevron construction contractor, Entact, is constructing the new M3 Stockpile site and Loading Zone. During the preparation of this site a small portion of sump/oil spray material was observed, excavated, and hauled off from the site. This site will be eventually used to stockpile contaminated material from inland excavations sites (M4 and possibly I-II) and to direct load haul trucks as opposed to loading them at TB8.



Excavating one of six trenches outside the B5A Excavation Site.



Decontamination cleaning of equipment between excavating dirty material and backfill operations at the B5A Site.



Some of the free floating product that remained in place after the B5A excavation of material outside the sheetpile wall.

Hauling Activities

- RTS hauled diluent-contaminated material from the TB9 Stockpile Sites to the Santa Maria Landfill. As of July 2nd, RTS had sixteen trucks hauling material to the landfill. For the week ending June 2, 2010, RTS hauled a total of 159 trips (approximately 3,742 tons of material). RTS has hauled a total of 40,856 loads of contaminated material to the landfill which is approximately 933,460 tons of material. RTS trucks continue to remain off of Betteravia Road between 4:30 and 5:30 pm as detailed in the SLO County Conditions. The first trucks do not leave the Field until after 8am each morning and the last loads arrive at the Landfill at approximately 3:45 (the landfill closes at 4 pm). Entact/RTS begins work at 7:00 am. Each truck is loaded with approximately 24 tons or 16 to 18 cubic yards of material.

G1A Pad, Oil Spray, and Access Road Removal

- Diluent was discovered during the oil spray removal at this site and much of it was removed and hauled to TB8. After coordinating with the RWQCB Chevron halted the excavation of diluent-contaminated material due to the depth of contamination and backfilled over the remaining contaminated sand.

M12 Excavation Site

- Remediation activities at this site have temporarily ceased. Chevron does not plan on conducting any excavation activities at this site until the B5A Site is well underway.

Perimeter Fence Installation

- Chevron has only completed the segment of the site-wide perimeter fence from the beach to the D14 Restoration Site.
- Installation of the perimeter fence has been temporarily delayed so as to address the need for further analysis of the potential presence of the EI Segundo Blue butterfly on the Project Site.

Other Field Activities:

- Chevron consultants continue to collect monitoring well samples throughout the Field according to their quarterly schedule.
- Chevron wildlife monitors conduct daily checks of the access roads prior to anyone entering the site.

Sensitive Species Issues:

- Chevron biologists continue to conduct their weekly survey of the TB8 Retention Basins.
- Chevron biologists continue to monitor restoration sites throughout the lease.
- The Western snowy plover monitor continues to conduct surveys of the beach three times a week. The Western snowy plover monitor reports that there has been a total of 29 western snowy plover nests observed this season. Of those 29 nests, 14 have been lost (to predation or wind), 9 nests are still active, and 6 nests have successfully hatched.
- Cows continue to access the field via the Main Road or Santa Maria River east of the property. However, cattle have not been observed in the area of the Marsh Ponds or B Road wetland restoration sites since the installation of the fence across the Santa Maria River.



Life at Guadalupe: lounging Western snowy plover chick.